

ADIT ON-SCREEN PRACTICE EXAM CANDIDATE INSTRUCTIONS

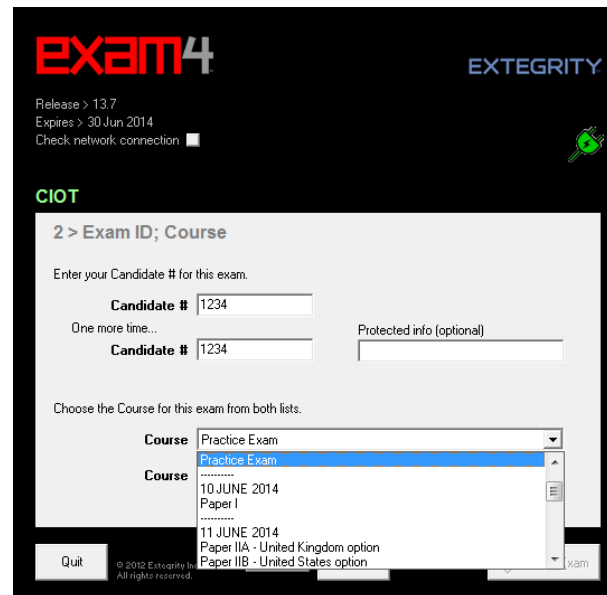
ADIT

- ▶ Make sure you are connected to the internet. ▶ Start the Exam4 application on your laptop.



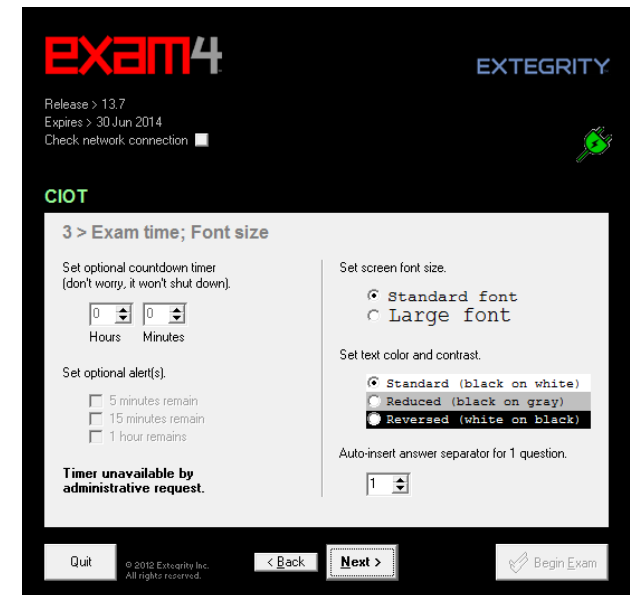
1 – START OR SAVE SCREEN

- ▶ Select **Prepare to start a new exam**.
- ▶ Click **Next**.



2 – CANDIDATE & EXAM ID SCREEN

- ▶ Type your four digit candidate number in both **Candidate #** boxes.
- ▶ Select the **Practice Exam** option in the first drop down box.
- ▶ Do the same in the second drop down box.
- ▶ Click **Next**.

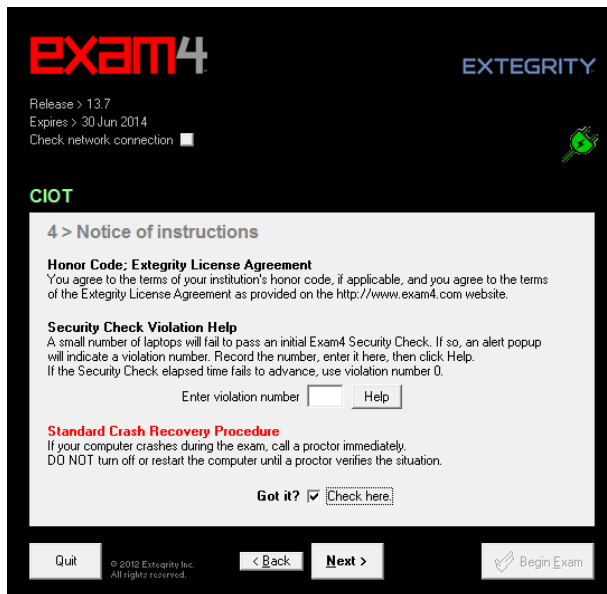


3 – ACCESSIBILITY SCREEN

- You can set reminder times – these are for your own use only, the official times are on the board at the front.
- You can also change the font size and the colour and contrast on the screen.
- ▶ Click **Next**.

ADIT ON-SCREEN PRACTICE EXAM CANDIDATE INSTRUCTIONS

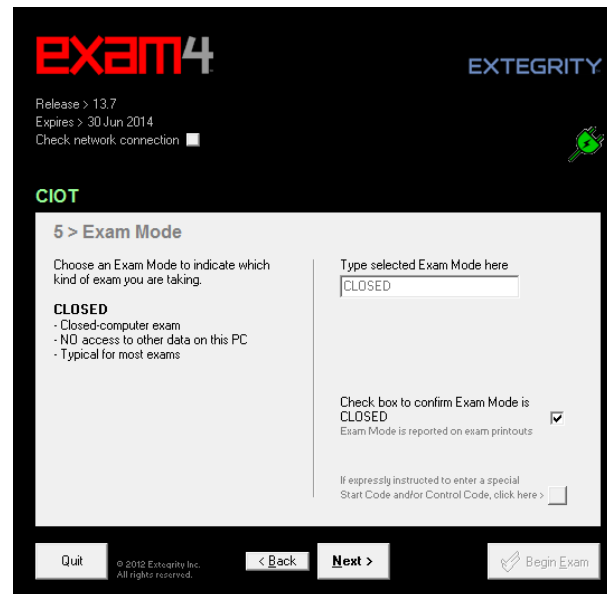
ADIT



4 – LICENCE CONFIRMATION SCREEN

You are being asked to confirm that you understand your use of the software.

- ▶ Tick the **Got it?** check box.
- ▶ Click **Next**.



5 – EXAM MODE SCREEN

This exam is **CLOSED**. You cannot change this.

- ▶ Tick the **CLOSED** check box.
- ▶ Click **Next**.



6 – READY TO BEGIN SCREEN

If your practice exam is being supervised, WAIT until the invigilator tells you to start!

- ▶ When you are told to start, click **Begin Exam**.

Your 15 minutes reading time will start now. For the first few minutes the Exam4 software will run the security check.

DO NOT start typing until you are told to do so.